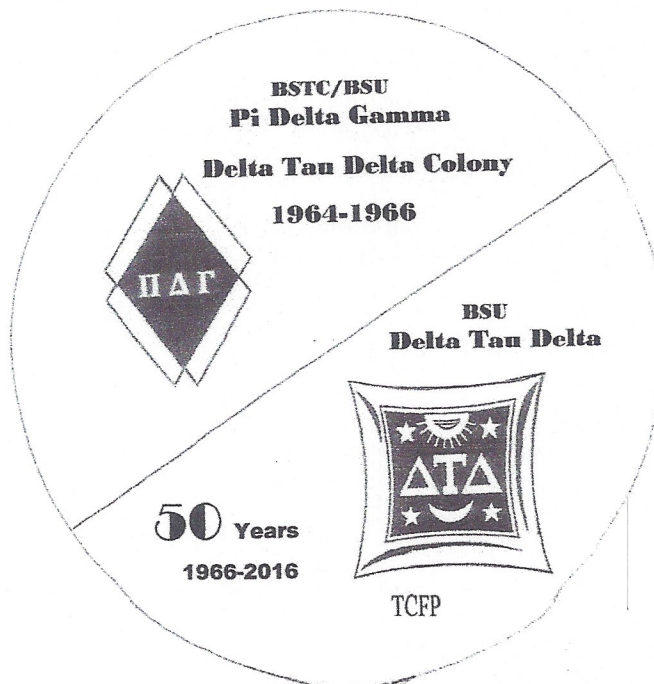
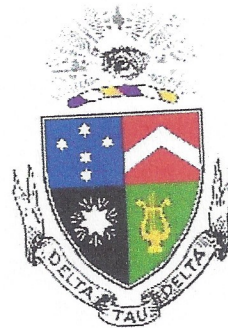


A ΠΔΓ – ΔΤΔ Portfolio

Pictures from the Doug Laslie '69 pin #28 collection
Layout by Dan Hockney '65 pin #11

*from Pi Delta Gamma local fraternity to Delta Tau Delta Epsilon Mu
International Fraternity at Ball State Teachers College/Ball State
University*



Revised 9-18-2017 10:12a.m.

The Beginning

Elliott Hall

The following six pages picture men from Elliott Hall who initiated a brotherhood that moved from Goovna campus club to Pi Delta Gamma local fraternity to Delt colony to Delta Tau Delta fraternity on the Ball State campus.



Men included in the following six Elliott Hall pages from various Orients are

<i>Louie Abraham</i>	<i>Goovna and Pi Delta Gamma</i>	
<i>Jerry Brelage</i>	<i>Goovna and Pi Delta Gamma</i>	
<i>Lyle Ball</i>	<i>Pi Delta Gamma</i>	
<i>Dan Hockney</i>	<i>Goovna, Pi Delta Gamma, and Delta Tau Delta</i>	<i>1965, pin #11</i>
<i>Dennis Hockney</i>	<i>Goovna, Pi Delta Gamma, and Delta Tau Delta</i>	<i>1965, pin #10</i>
<i>Dick Huntoon</i>	<i>Goovna and Pi Delta Gamma</i>	
<i>Ron Lancioni</i>	<i>Goovna and Pi Delta Gamma</i>	
<i>Jay Mayer</i>	<i>Goovna and Pi Delta Gamma</i>	
<i>Bill Pfenninger</i>	<i>Pi Delta Gamma and Delta Tau Delta</i>	<i>1965, pin #15</i>
<i>Tom Seffrin</i>	<i>Goovna, Pi Delta Gamma, and Delta Tau Delta</i>	<i>1965, pin #12</i>
<i>Jeff Snyder</i>	<i>Goovna and Pi Delta Gamma</i>	
<i>Bob Stanelle</i>	<i>Goovna and Pi Delta Gamma</i>	
<i>Lyle Thompson</i>	<i>Goovna and Pi Delta Gamma</i>	
<i>Gary Turner</i>	<i>Goovna, Pi Delta Gamma, and Delta Tau Delta</i>	<i>1966, pin #37</i>
<i>Chuck Twa</i>	<i>Pi Delta Gamma</i>	
<i>Fred Woodruff</i>	<i>Goovna, Pi Delta Gamma, and Delta Tau Delta</i>	<i>1966, pin#16</i>
<i>Randy Ziolkowski</i>	<i>Goovna and Pi Delta Gamma</i>	

1961-1962

ELLIOTT HALL



ELLIOTT HALL COUNCIL—Row 1: Don Wilson, Ted Wright, Bill Miller, Tom Haddock, Bill Dwyer. Row 2: [unreadable]

Row 1: [unreadable], [unreadable], [unreadable], [unreadable], [unreadable]. Row 2: [unreadable], [unreadable], [unreadable], [unreadable], [unreadable].

[unreadable], [unreadable], [unreadable], [unreadable], [unreadable], [unreadable], [unreadable], [unreadable], [unreadable].

Elliott Hall Wins Homecoming Decorations Trophy

Elliott Hall for the second consecutive year took first place honors in the residence hall lawn decorations of Homecoming. The theme of the colorful decorations was "Victory Springs". Men of the hall worked over three weeks on the winning entry.

During the fall quarter Dr. John Klein and Dr. Kenneth Collier spoke to residents. Dr. Klein spoke of student aids and loans available, and Dr. Collier's

topic was studying on weekends.

The public relations committee of the hall published a newsletter, "The Elliott Hall Letter." The mimeographed letter was published each Monday. The news contained in the release varied from straight news to "letters to the editor."

The "Proclainers" won two intramural residence hall trophies by capturing first place in flag football and basketball.

Throughout the year the culture com-

mittee sponsored various programs. church leaders who spoke of their religious beliefs. Among the guest speakers were Edward C. Williams, Rev. Richard Behrman, Rev. James Babbitt, Rev. Richard Newby, Rev. Russell Lockwood, and William Detweiler.

Louie Abraham, Jerry Brelage, and Randy Ziolkowski were members of Goovna and Pi Delta Gamma.

ELLIOTT HALL—Row 1: [unreadable], [unreadable], [unreadable], [unreadable], [unreadable], [unreadable], [unreadable], [unreadable], [unreadable], [unreadable]. Row 2: [unreadable], [unreadable], [unreadable], [unreadable], [unreadable], [unreadable].

[unreadable], [unreadable], [unreadable], [unreadable], [unreadable], [unreadable], [unreadable], [unreadable], [unreadable], [unreadable], [unreadable], [unreadable], [unreadable], [unreadable].

[unreadable], [unreadable], [unreadable], [unreadable], [unreadable], [unreadable], [unreadable], [unreadable], [unreadable], [unreadable], [unreadable], [unreadable], [unreadable], [unreadable], [unreadable].

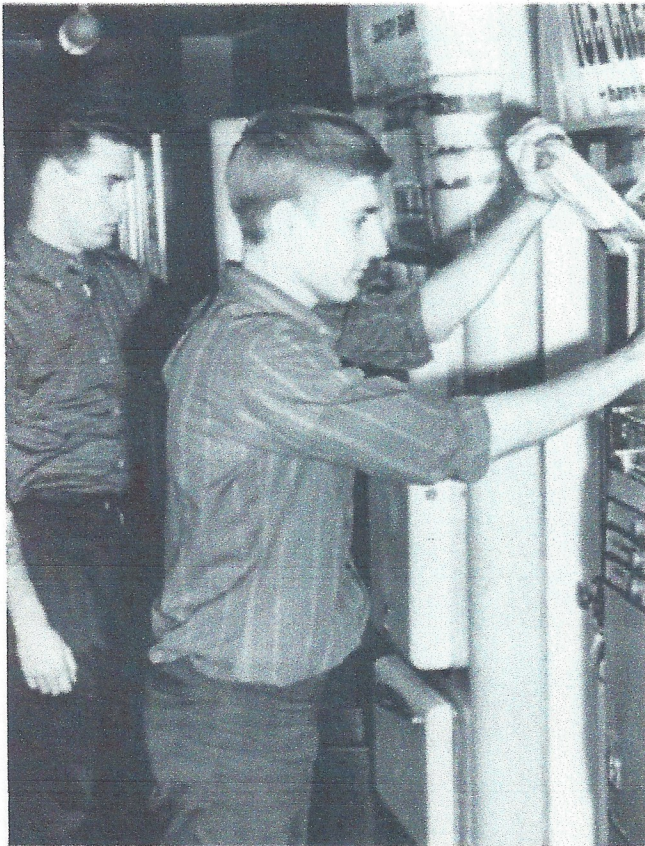
Louie Jerry Randy



Tom Seffrin and Dan Hockney entered Elliott Hall in Fall 1961 as Freshmen - Tom from Hagerstown, IN. and Dan from North College Hill, OH. Little did either then realize that they would become charter members of Delta Tau Delta Epsilon Mu.

1962-1963

Elliott Takes First Place In Homecoming Decorations



It's time for that mid-night snack.

For the third consecutive year, Elliott Hall took first place in the residence hall lawn decorations for Homecoming. The theme for this year's entry was "Thump the Pumas."

Athletically speaking, the Elliott Hall Free-loaders won the residence hall flag football championship for the second year in a row. Residents also sponsored their own tournaments to determine the hall champions.

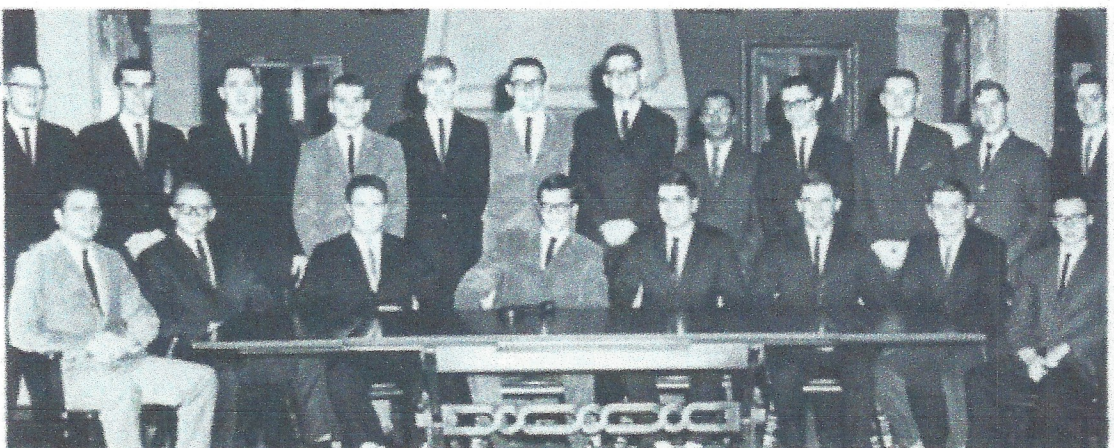
Added to the dorm facilities this year was a library for the use of the residents. To keep the men posted on the dorm activities, an "Elliott Letter" was published each week. Scholastically, the men compiled a 2.49 average accumulative ratio for the fall quarter.

Other activities included trade parties, the presentation of a skit at the Student Center Birthday Party, and the annual closed dance.

ELLIOTT HALL COUNCIL...Front Row...Don Hooley, Willie O'Brien, Carl Jankovic, Paul Johnson, Charles Smith, Bob Green, Mike Holt, Gerry Jankovic, Rex Zimanyi, George Miki, Harold Tom, Arthur, Jim

...Kramer, Bob Reiding, Ed Kell, David Lazar, Ed Victor, Joseph, Mike, Bob Stovall, Dennis Muehl, Evans Nelson, Virgil Neuman.

**Goovna President
Jerry Brelage**



1962-1963



FIRST FLOOR—Front Row—Paul Johnson, Larry Jolly, Fred Wenzel, Charles Lusk, Bob Green. Row 2—Charles Short, Bob Johnson

Charles Tice, Stephen Love, Frank Anshberg. Row 2—Bob King, Jim Fernald, Bob David Luter, [Director], Mike Kelly, Virgil Newman.

Randy Ziokowski
Proposed the name "Goovna"



SECOND FLOOR—Front Row—Ken Scott, Ed Strickle, James Mac Kelly, Virg Jim Granger, Bob Semore, Dave Long. Row 2—Joseph Jones, Darryl Schrader, Don Mackay, Edward Foxen, Tom Evans, Ken Thompson, Matt Alexander, Larry Moore. Row 3—Jim Bennett

Randy Ziokowski, Phil Nelson, Daniel Thomas, David Vignolesky, Bob Olin, Dennis Hugel. Row 4—James Beckwith, Darryl Chambers, Mike Halgren, Douglas Kukuloni, Jay Meyer, Tom Jellin

THIRD FLOOR—Front Row—Larry Daly, Glen Oltmit, Ed Pih, Jerry Havel, Bob Newman, Mike Geyer, Ted Wright, Duane Hamilton. Row 2—James Fickel, Bruce Anthony, Carl Becklow, Dick Hummel, Jim Frazar, Ed Kasech, Tom Conant, Jerry Gilman, Evans Nelson. Row 3—

Paul, Sandy Harkin, Cass Welcher, Ty Zehr. Row 4—Roger Love, Bruce Carter, Duane Hoggan, Ken Rankin, Jim Nantico, Max Gates, Jim Beneman, Ed Kuhl, Jeff Souder



1963-1964



LUCINA HALL, Front Row: Sally Wasson, Mary Green, Carolyn Coates, Lela Harty, Linda Walker. Second Row: Janice Boonershine, Cheryl Brown, Leda Ann Thomas, Mary Lynn Hill, Jean Ross, Maryellen Grossler, Jan Bennett, Mary Robinson, Beck Moss, Sara Hallinan, Joe Novak, JoAnn Miller, Susie Male, Patty Johnson, Thelma Young, Tom Wilcox, Shanna Stafford, Karen Barr, Nancy Dugan, Joyce Boyce.

LUCINA HALL

Lucina Hall offered a trade party in the auction to raise money for Campus Club. Delta Chi purchased the party. Lucina also had a trade party with the Men Off Campus. The residents worked with the men of Elliott Hall to decorate both Elliott and Lucina for the Christmas holidays. A Christmas party was given for children from the Delaware County Children's Home and for other underprivileged children from the Muncie and the surrounding area.

ELLIOTT HALL

During the year, Elliott Hall sponsored two campus record hops. In the spring, they had a closed dance for residents and their dates in downtown Muncie. They also had a closed party at Christmas time in the hall for the men and their dates. Their Christmas decorations were put up with the help of the residents of Lucina. For Parent's Day, the hall held an open house and served refreshments.

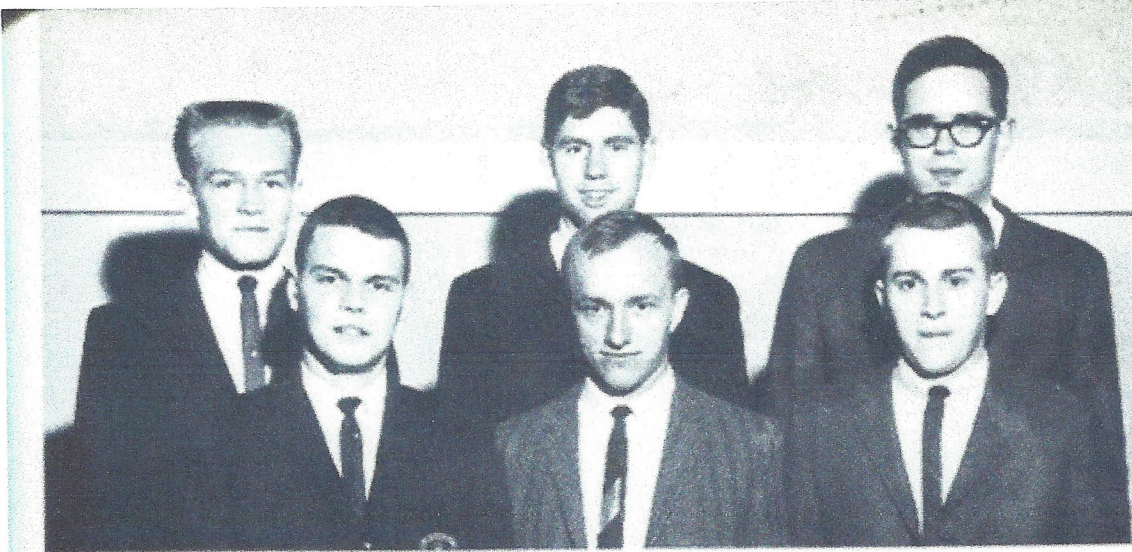
ELLIOTT HALL, Front Row: Dennis Nichols, Dick Hanson, Dennis Hockney, Kurtz Love, Bob Hartman. Back Row: Don Warren, Howard Shapiro, Tony Boyd, Ron Taylor, Ron Wilson, Paul Evans, Ron Smith, Lyle Thompson, Daniel Casperica, William Azooz.



*1st Pi Delta Gamma
President - Dennis Hockney*

276

1963-1964



MEN'S RESIDENCE HALL ASSOCIATION Front Row: Steve Richards, Donald Pirok, Jeff McBride; Back Row: Bob Harman, Paul C. Baker, Don McAfee.

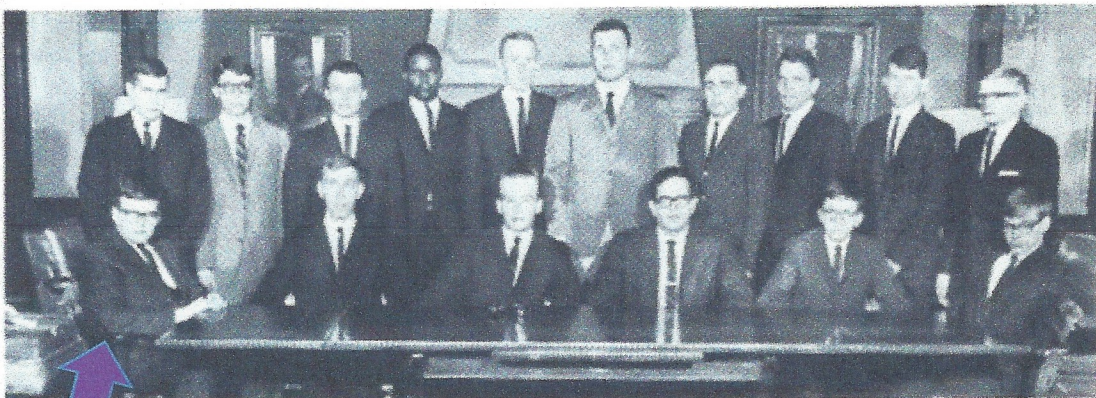
MRHA Officers

The Men's Residence Hall Association probed questions concerning residence hall living. One of the problems is over-crowding. Another problem on this campus is that students over 21 years of age want the privilege to choose their own housing.

Elliott Hall

Again the men of Elliott went all out for annual Homecoming decorations. Their theme, "The Greatest Festival on Earth," was depicted by a circus, complete with sideshow, posters, and acts. After the morning of judging, the men held a punch hour for their guests.

ELLIOTT EXECUTIVE COUNCIL Front Row: Ron Lancioni, Ron Reinking, Bob Harman, Don McAfee, Gary Treney, Lyle Thompson; Back Row: Nelson Evans, Joe Hagler, Jerry Hoyt, Duane Merrill, Chad Riddle, Bob Wells, Dean Weidner, Dan Heckney, Steve Salafosse, Ron Wilson.



Ron Lancioni
Designed Pi Delta Gamma Crest

The Library
Ball State Teachers College

From Pi Delta Gamma to Delta Tau Delta Epsilon Mu
November 12, 1966



Jim Nelson '67 pin #1 receiving the Epsilon Mu
Charter of Delta Tau Delta from Supreme Court
Justice and President of Delta Tau Delta
International Fraternity Tom Clark

Chapter Enternal

Pin numbers 1-100

Gary Turner	01-30-1966	'66 pin #37
Ricky Hawthorne	?	'68 pin # 8
Bob Peterson	11-12-1967	'67 pin #21
Steve Macy	05-05-1969	'69 pin #51
Richard Maxwell	09-24-1992	'68 pin #41
James Talbott	01-17-1993	'71 pin #93
John Bailey	11-24-1993	'69 pin #31
Lyle Ball	02-03-1994	'65 pin #65
Tim McGuire	12-18-1996	'69 pin #70
David Painter	01-22-2002	'65 pin #14
Tom Borshoff	02-04-2004	'69 pin #24
Terry Hunsucker	01-27-2014	'71 pin #91
Richard Carmichael	01-23-2014	'68 pin #25



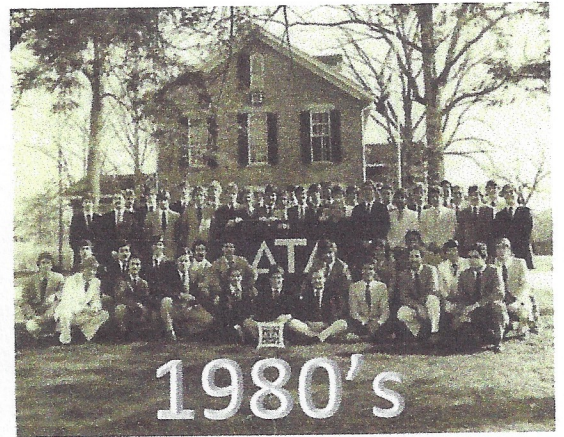
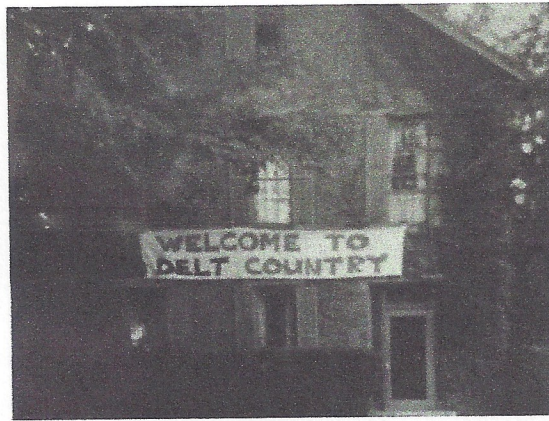
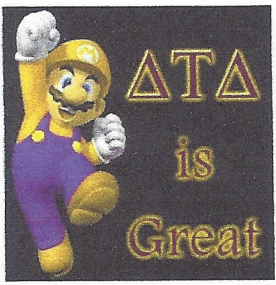
Funeral Rush Party

Spring 1967

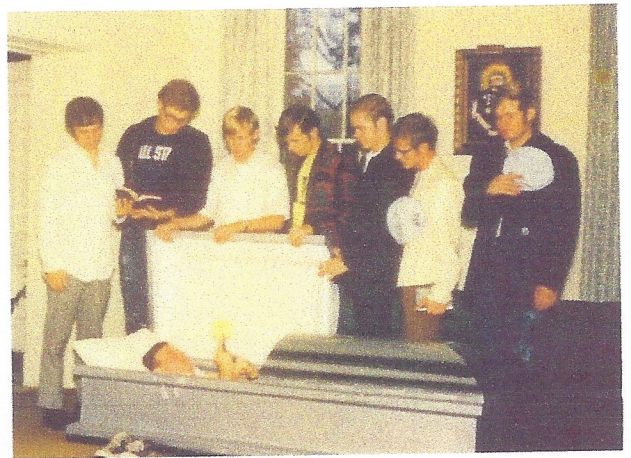


Front left, then counterclockwise:

Doug Laslie '69 #28, Joe Erne '68 #2, Carl St. Myer '66 #13, Louie Russell '67 #18, Bob Witt '69 #38, and Jim Johnson '67 #7



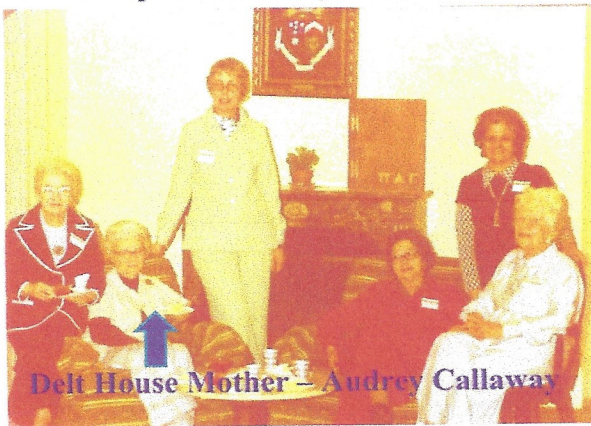
Some pictured are Mark Burkhart, Tom Cripe, Fred Strantz



XX
XX

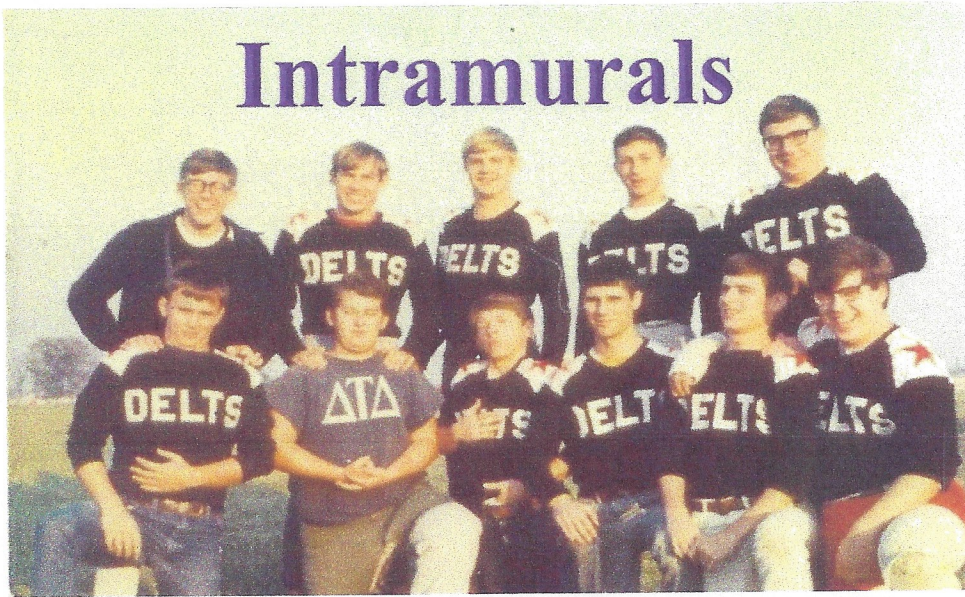


Campus Fraternity House Mothers



Delt House Mother - Audrey Callaway

Intramurals



Front Row: Dick Goble '68 # 44, Rick Hawthorne '68 #8, Mike Leachman (did not activate), Greg Walsko '70 #57, Russ Hefley '69 #45, and Dave Toth '71 # 49 Back Row: Roy Connor '69 #29, Terry Moore '70 #64, Steve Macy '69 #51, Dick Carmichael '68 #25, and Rob Mohlke '69 #47

Bike-a-thon



Right to Left: Roy Connor '69 #29, Dick Goble '68 #44, Rob Mohlke '69 #47, Steve Miller '70 #85, Jim Stefanovich '69 #74



Joel Bartenbach '70 #66, Jim Talbott '71 #93, and Dave Goodwin '70 #73 relax in the shelter formal lounge.



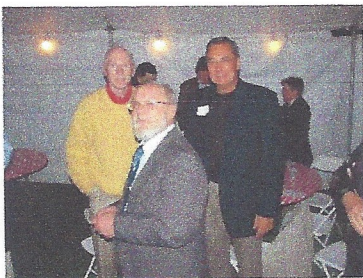
The 40th Reunion – 2006



*Brent Tuttle '72 #134, ?????, Doug Laslie '69 #28,
Cliff Cochran '69 #35,*



*Gary Riggle '78 #70, Cliff Cochran '69 #35,
Mike Yancey '70 #56*



*Dan Guio '68 #20
Phil Rager '68 #22
Mike Szentesy '70 #67*

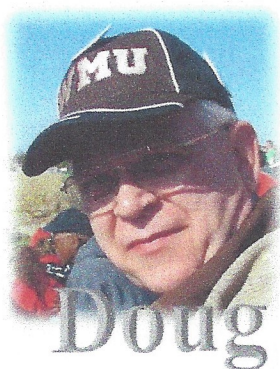
*Steve/Susan Brace '69 #34
Mike Szentesy '70 #67
Bob Philbert '69 #53*



The 50th Reunion – 2016



Doug and Nancy Laslie



Photos in this collection are from Charter Member Doug Laslie '69 pin #28 collection of over 200+ pictures attained over the past 50+ years of Pi Delta Gamma local fraternity and Delta Tau Delta international fraternity located at Ball State University, Muncie, Indiana. Layout of the portfolio was completed by Charter Member Dan Hockney '65 pin #11.

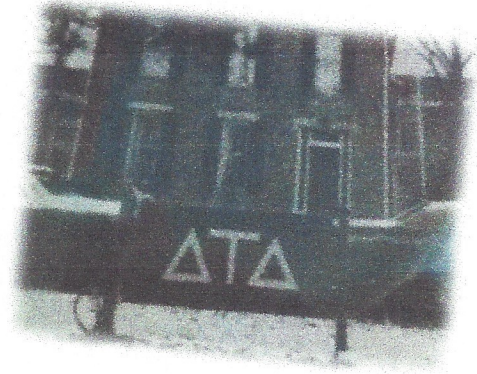


A recollection by Doug Laslie '69, pin #28



One of the most special recollections I have centers on the shelter. We were so thrilled to finally take possession of the Parson property that nothing could dampen our spirits. We had achieved our second most important goal as a brotherhood, the first being our installation as the Epsilon Mu

chapter of Delta Tau Delta. Shortly after taking possession, it was obvious that this milestone had to be announced to the world; we needed a sign for the front of the shelter. This is especially meaningful to me because my Dad designed, built, and paid for this first sign. Even though he was never in a fraternity and was only able to complete two years of college before the beginning of World War II, it was his way of letting me know that he recognized and appreciated how important this fraternity was to me.



This first sign wasn't as grand as the one gracing the shelter today, but for us at that time it was pretty special. It was over six feet long, made of 4x4 rough-sawn cedar and suspended between two cedar posts. The background field was inch-thick plywood clad in black Masonite. The Greek letters, which I think were made by Dick Pawlowski, were painted in gold. Our pride couldn't have been matched as we stood around our newly-erected sign on that cold night singing "Delta Shelter" among the people who were so important in our lives. I will always be grateful to my Dad for providing this symbol for us



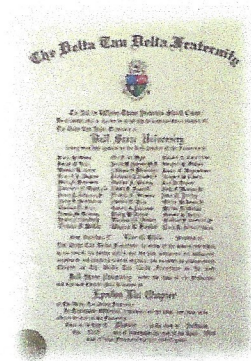
My second recollection also involves the sign. Sometime during the first night after it was installed, someone decided that our pride needed to be dampened, so this culprit doused the sign with gray paint. We discovered the damage shortly after it happened and naturally we were enraged! We weren't, however, going to allow the vandals (I would bet it was the Sigma Chi's) any time to gloat. We dismantled the sign and took it to the basement where we cleaned and repainted the posts, black background, and gold letters. We had the sign reinstalled before dawn the next morning amidst much cheering and back-slapping. We definitely took the wind out of the vandals' sails (it might have been an act of jealousy by the Sigma Alpha Epsilon's, but my money is still on the Sigma Chi's). There were a lot of classes cut that day, but we didn't care. We had foiled the best efforts of an unknown rival.

The sign has undergone numerous evolutions over the last 50 years, and the one out front today is spectacular. But that first sign will always have a special spot in "the old guard's" collective memories.

A recollection by Dan Hockney '65, pin #11

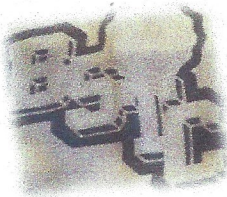


Three freshmen – naïve Elliott Hall Residents – Fall 1961. Who could have imagined that five years hence, these three men along with 33 others would have their names scribed on a Delta Tau Delta Epsilon Mu Charter signed by the Delta Tau Delta Fraternity President and Justice of the



United States Supreme Court, Thomas C. Clark. Those three men? Dan Hockney '65 #11, Tom Seffrin '65 #12, and Bill Pfenninger '65 #15.

What followed after the 1961-62 school year at Ball State Teachers College (BSTC) - I relate to a "perfect storm." From guys participating in intramurals and hall government, playing Euchre and double-deck Pinochle, and generally doing what college guys did in the early 1960's at a more restricted dorm and college environment evolved into a congealed group of men who organized as a campus club (Goovna, 1962-63), a local fraternity (Pi Delta Gamma, 1963-64), a National Fraternity Colony (DTD Colony, 1965-66), and a Chartered Fraternity Chapter (Epsilon Mu, 1966). I am humbled and extremely proud to be 1 of 36 scribed members on the ΔΤΔ-EM Charter.



For an electronic copy of the 46 page "Early History" which includes the "Nelson Collection" or the 48 page "Laslie Photo Collection," send an email request to Dan Hockney at dhockney02@gmail.com.

Dinner with charter members before attending a 2016 EM Delta Tau Delta pledge initiation/Ritual at National Headquarters in Fishers

Dan Hockney '65 #11, Fred Woodruff '66 #16, Louie Russell '67 #18, Tom Cripe '68 #9, Doug Laslie '69 #28

